

# Ansys Installation and Setup



Structures
Mechanical
LS-DYNA
Forming
Motion
Sherlock
Additive Solutions
nCode DesignLife
Autodyn
Aqwa



Acoustics Simulation
Sound



Fluids
Fluent
CFX
Chemkin-Pro
Forte
Rocky
FENSAP-ICE
EnSight
Turbo Tools
Polyflow
Model Fuel Library



Electronics
HFSS
Maxwell
SIwave
Icepak
Motor-CAD
Q3D Extractor
NuHertz
EMA3D Cable
EMA3D Charge



Semiconductor
RedHawk-SC
RedHawk-SC Electrothermal
Totem
PowerArtist
RaptorH
Pharos
Exalto
VeloceRF
PathFinder
Path FX
Clock FX



Optics and VR
Speos
VRXPERIENCE HMI
VRXPERIENCE Light Simulation
VRXPERIENCE Perceived Quality

## Zemax Optics

Zemax OpticStudio
Zemax OpticBuilder
Zemax OpticStudio STAR Module



## Photonics

Lumerical FDTD
Lumerical FDTD Accelerator
Lumerical MODE
Lumerical Multiphysics
Lumerical INTERCONNECT
Lumerical CML Compiler



3D Design
Discovery



## Mission Engineering

STK
ODTK
TETK



## Digital Twin

Twin Builder
--------------



Embedded Software
SCADE Suite
SCADE Display
SCADE Vision
SCADE Architect
SCADE Test
SCADE Lifecycle



## Safety Analysis

Digital Safety Manager
medini analyze
medini analyze for Cybersecurity
medini analyze for Semiconductors



## AV Simulation

AVxcelerate Headlamp
AVxcelerate Sensor



Materials
Granta MI
Granta Selector
Granta EduPack
Granta MDS



## Connect

Granta MI
Granta Selector
optiSLang
Minerva
ModelCenter



## Cloud

Ansys Cloud
-------------

## Installer lists

- Download Structures
- Download Fluids
- Download Electronics
- Download Discovery (3D Design)
- Download Granta Edupack
- Download SPEOS
- Ansys Tools Details

# Ansys Installation and Setup

## Installation Steps:

1. Extract the zip file to a local drive (**do not put it on a network drive or external drive/USB**)
2. Right click on 'setup.exe' ('autorun.exe' for Electronics), then '**Run as administrator**'
3. Select 'Install Ansys Products' ('Install Electromagnetics Suite' for Electronics), then mostly take all defaults.

### Note:

- 3.1 Make sure there are at **least 50 GB** remaining on the C drive. If install more than 1 package, a **minimum of 100GB** space on C drive is **recommended**. Otherwise, Install Ansys on another local drive
- 3.2 When prompted for license server Hostname, use this IP address (**Mahidol IP**)
- 3.3 Select '**Allow access**' for any **Windows Defender Firewall pop-ups**
- 3.4 For Discovery Installation, select "Server Shared License" when prompted for licensing mode. Once installation is done, it will check the **compatibility of the graphics card** on the machine. This should show '**compatible**'

Fluids & Structures Installing Video

Electronics Installing Video

# Platform Support and Graphic Cards

**Platform Support by Application/Product**

**CAD Support**

**Graphics Cards Tested**

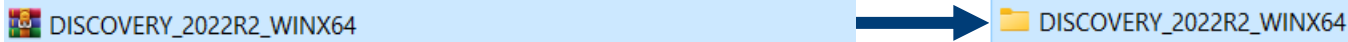
**Recommended Hardware**

**More Details**

# Ansys Discovery Installation and Setup

## Installation Steps:

1. Extract the zip file to a local drive (**do not put it on a network drive or external drive/USB**)



2. Open Folder, Right click on 'setup.exe', then '**Run as administrator**'
3. Select '**Install Ansys Products**', then mostly take all defaults.



4. When prompted for license server Hostname, use this IP address (**License Server IP**)

# Ansys Discovery Installation and Setup

## Note:

- 3.1 Make sure there are at **least 50 GB** remaining on the C drive. If install more than 1 package, a **minimum of 100GB** space on C drive is **recommended**. Otherwise, Install Ansys on another local drive
- 3.2 Select '**Allow access**' for any **Windows Defender Firewall pop-ups**
- 3.3 For Discovery Installation, select "Server Shared License" when prompted for licensing mode. Once installation is done, it will check the **compatibility of the graphics card** on the machine. This should show '**compatible**'

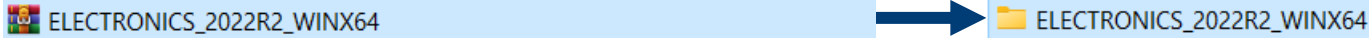
Fluids & Structures & Discovery  
Installing Video

Electronics Installing Video

# Ansys Electronics Installation and Setup

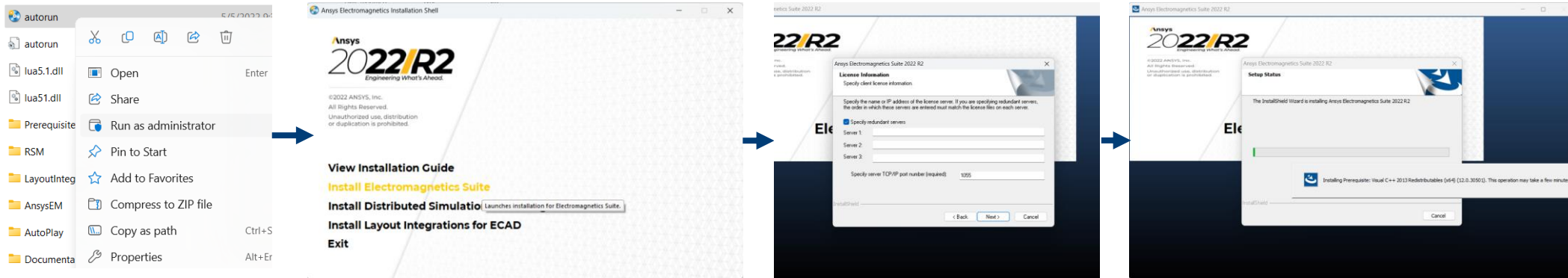
## Installation Steps:

1. Extract the zip file to a local drive (**do not put it on a network drive or external drive/USB**)



2. Open Folder, Right click on 'autorun.exe', then '**Run as administrator**'

3. Select '**Install Electromagnetics Suite**', then mostly take all defaults.



4. When prompted for license server Server 1, use this IP address (**License Server IP**), then click next and waiting for installing, then finish.

# Ansys Electronics Installation and Setup

## Note:

- 3.1 Make sure there are at **least 50 GB** remaining on the C drive. If install more than 1 package, a **minimum of 100GB** space on C drive is **recommended**. Otherwise, Install Ansys on another local drive
- 3.2 Select '**Allow access**' for any **Windows Defender Firewall pop-ups**
- 3.3 For Discovery Installation, select "Server Shared License" when prompted for licensing mode. Once installation is done, it will check the **compatibility of the graphics card** on the machine. This should show '**compatible**'

Fluids & Structures & Discovery  
Installing Video

Electronics Installing Video

# Ansys Fluids Installation and Setup

## Installation Steps:

1. Extract the zip file to a local drive (**do not put it on a network drive or external drive/USB**)

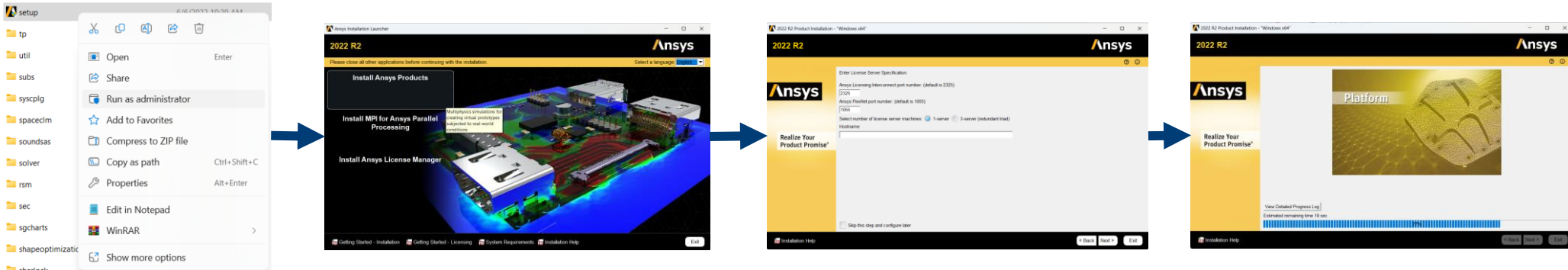
FLUIDS\_2022R2\_WINX64



FLUIDS\_2022R2\_WINX64

2. Open Folder, Right click on 'setup.exe', then '**Run as administrator**'

3. Select '**Install Ansys Products**', then mostly take all defaults.



4. When prompted for license server Hostname, use this IP address (**License Server IP**)



# Ansys Fluids Installation and Setup

## Note:

- 3.1 Make sure there are at **least 50 GB** remaining on the C drive. If install more than 1 package, a **minimum of 100GB** space on C drive is **recommended**. Otherwise, Install Ansys on another local drive
- 3.2 Select '**Allow access**' for any **Windows Defender Firewall pop-ups**
- 3.3 For Discovery Installation, select "Server Shared License" when prompted for licensing mode. Once installation is done, it will check the **compatibility of the graphics card** on the machine. This should show '**compatible**'


Fluids & Structures & Discovery  
Installing Video

Electronics Installing Video


# Ansys Granta EduPack Installation and Setup

## Installation Steps:

1. Extract the zip file to a local drive (**do not put it on a network drive or external drive/USB**)

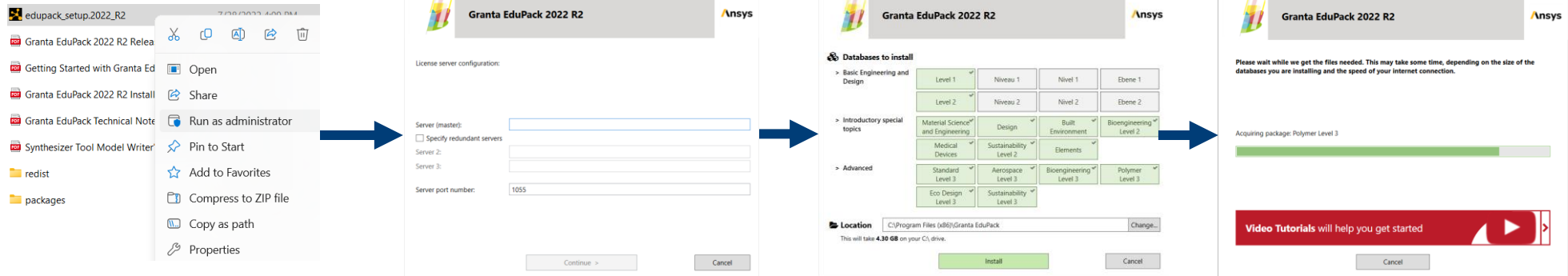
 GRANTAEDUPACK\_2022R2.01\_WINX64



 GRANTAEDUPACK\_2022R2.01\_WINX64

2. Open Folder, Right click on 'edupack\_setup.2022\_R2.exe', then '**Run as administrator**'

3. When prompted for license server **Server (master)**, use this IP address (**License Server IP**)



# Ansys Granta Edupack Installation and Setup

## Note:

- 3.1 Make sure there are at **least 50 GB** remaining on the C drive. If install more than 1 package, a **minimum of 100GB** space on C drive is **recommended**. Otherwise, Install Ansys on another local drive
- 3.2 Select '**Allow access**' for any **Windows Defender Firewall pop-ups**
- 3.3 For Discovery Installation, select "Server Shared License" when prompted for licensing mode. Once installation is done, it will check the **compatibility of the graphics card** on the machine. This should show '**compatible**'

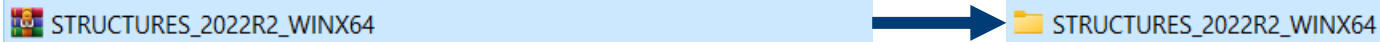
Fluids & Structures & Discovery  
Installing Video

Electronics Installing Video

# Ansys Structures Installation and Setup

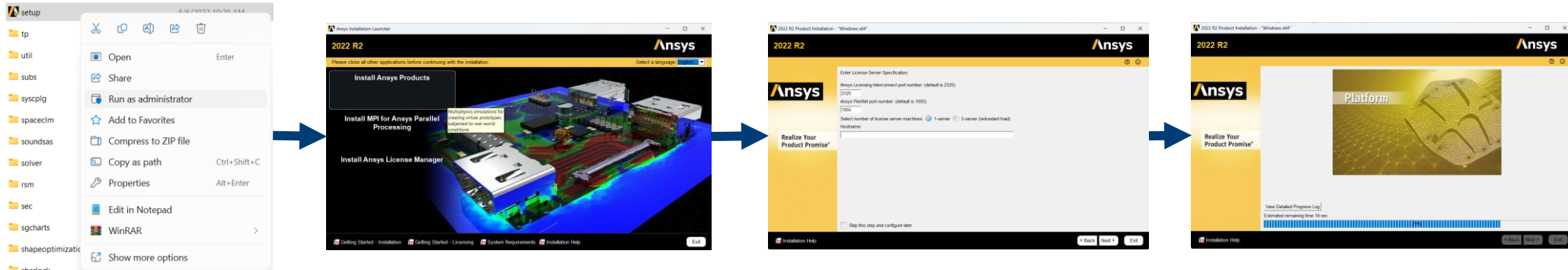
## Installation Steps:

1. Extract the zip file to a local drive (**do not put it on a network drive or external drive/USB**)



2. Open Folder, Right click on 'setup.exe', then '**Run as administrator**'

3. Select '**Install Ansys Products**', then mostly take all defaults.



4. When prompted for license server Hostname, use this IP address (**License Server IP**)

# Ansys Structures Installation and Setup

## Note:

- 3.1 Make sure there are at **least 50 GB** remaining on the C drive. If install more than 1 package, a **minimum of 100GB** space on C drive is **recommended**. Otherwise, Install Ansys on another local drive
- 3.2 Select '**Allow access**' for any **Windows Defender Firewall pop-ups**
- 3.3 For Discovery Installation, select "Server Shared License" when prompted for licensing mode. Once installation is done, it will check the **compatibility of the graphics card** on the machine. This should show '**compatible**'

Fluids & Structures & Discovery  
Installing Video

Electronics Installing Video